

# Customer of the Week

**TCM** GROUP  
Putting People First™

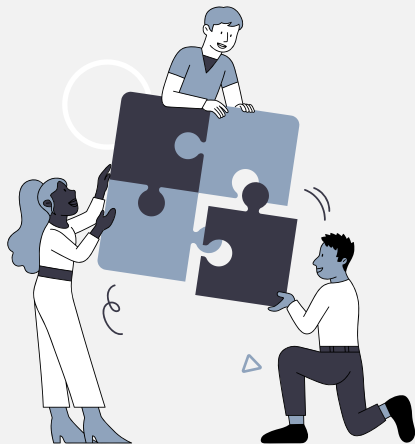


**Rody Bristow-Jones and  
Emma Collins**

The Francis Crick Institute



[www.thetcmgroup.com/cotw](http://www.thetcmgroup.com/cotw)



Get inspired



# Taking research to the next level



The Francis Crick Institute is an independent charity, established to be a UK flagship for discovery research in biomedicine. More than 2,000 staff and students use their wide-ranging knowledge and expertise to work across disciplines and explore biology at all levels, from molecules through cells to entire organisms.

The Crick's mission is discovery without boundaries. They don't limit the direction their research takes and they want to understand more about how living things work to help improve treatment, diagnosis and prevention of human disease, and generate economic opportunities for the UK.

Embarking on continued investigations training over the years shows the Institute's ongoing commitment to learning, running through the organisation's process and principles. They're taking their ethos of research, improvement and prevention to learn more about best practice, improve standards and prevent further conflict within the organisation.



# The lesson in learning

Undertaking workplace investigations training is of significant importance as it helps an organisation to build and sustain a fair, safe, and productive work environment - that's something that all employees deserve. It therefore shows a real dedicated effort to happy, healthy and harmonious workplace culture.



Investigations training specifically is hugely beneficial for a number of reasons:



- Ensuring compliance
- Fair treatment of employees
- Effective conflict resolution
- Preventing bullying, discrimination and harassment
- Continual improvement and skill development
- Protecting organisational reputation

The list could go on.

“

**The team have been proactive and helpful.**

The team at TCM have thoroughly enjoyed working with Emma and Rody to deliver investigations training for Francis Crick Institute.

They have been completely proactive and helpful in setting up an engaging and useful course and the trainer really enjoyed visiting colleagues onsite for a great half-day session!

**Chloe Pye**

Investigation Services Coordinator at The TCM Group



[www.thetcmgroup.com](http://www.thetcmgroup.com)



[thetcmgroup](https://www.thetcmgroup.com)



0800 294 9787



[info@thetcmgroup.com](mailto:info@thetcmgroup.com)

**TCM**  
GROUP

Putting  
People First™